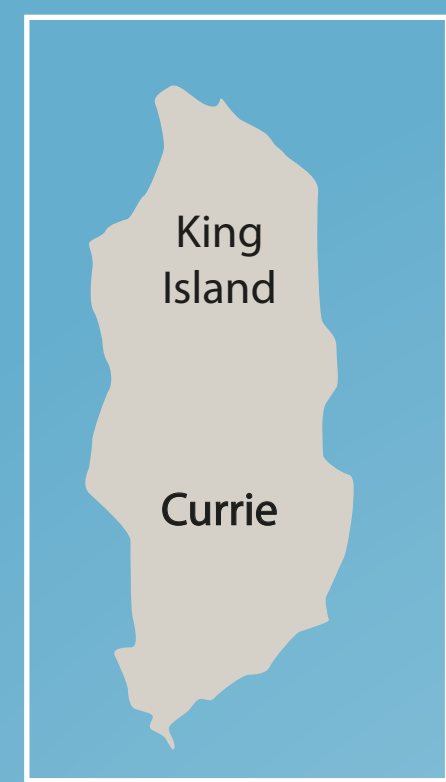


# AIMING TO BUILD RESILIENCE AND CAPACITY

IN BUSHFIRE PREVENTION, PREPAREDNESS AND  
RESPONSE WITH AT RISK TASMANIAN COMMUNITIES



**2020-22 PRIORITIES**  
**16 Communities**



Tasmania Fire Service



**TURNERS MARSH**



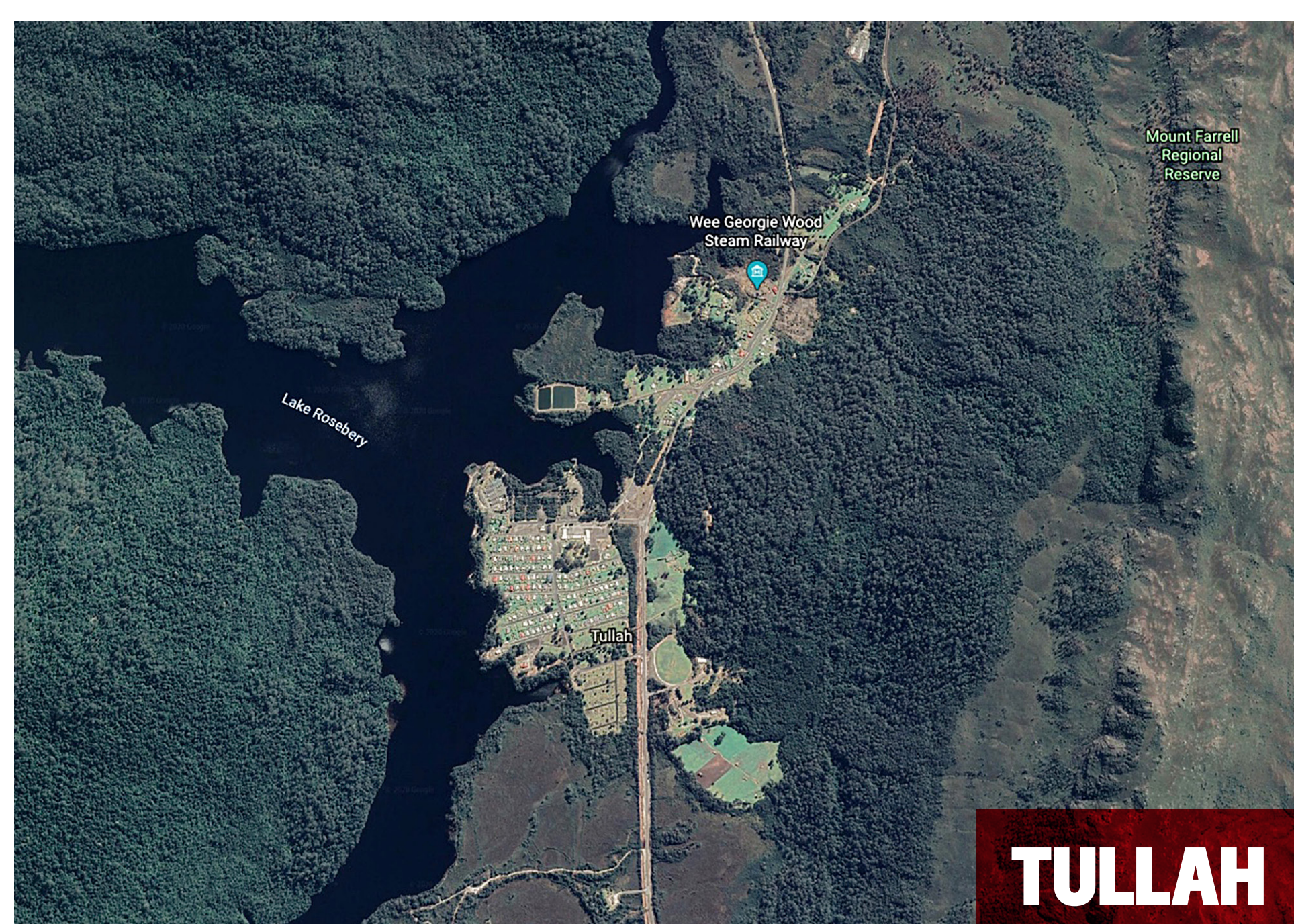
**BINALONG BAY**



**DODGES FERRY**



**QUEENSTOWN**



**TULLAH**



**MARGATE**